

# Shoreline Adaptation Plans:

Weiti Estuary to Devonport Peninsula & Waitematā Harbour West

Community Engagement Updates



**AK  
HAVE  
YOUR  
SAY**

[aucklandcouncil.govt.nz](http://aucklandcouncil.govt.nz)

# Community Engagement: Waitemata Harbour West and Weiti Estuary to Devonport

## Purpose:

- Education on coastal hazard risk over changing time horizons (short, medium and long term)
- Understand local communities values and connections to coastal spaces and places, identify aspirations,
- challenges & opportunities and better understand perceptions and views on coastal hazard risk
- Collate feedback on the proposed (DRAFT) coastal adaptation strategies



## We asked locals:

- Where do you visit the coast? What do you do at the coast?
- What facilities do you value and use in council owned or managed coastal areas? What makes these coastal spaces valuable to you?
- What has your experience of change been at the coast? Have you seen the impacts of coastal flooding or erosion, and if so, did this change how you interacted with the coast?
- Reflecting on our different coastal adaptation strategies, what do you think of the proposed options for your coastline?
- What approach do you think is best to manage risk from coastal hazards for council owned land and assets in coastal areas?



# Events

## Market Style Drop-in:

- Devonport Markets,
- Takapuna Markets

## Presentations and Q/A:

- Beach Haven Residents Association Hall
- Takapuna War Memorial Hall

## Drop in Library events:

- Devonport Library
- Albany Village Library
- East Coast Bays Library
- Glenfield Library

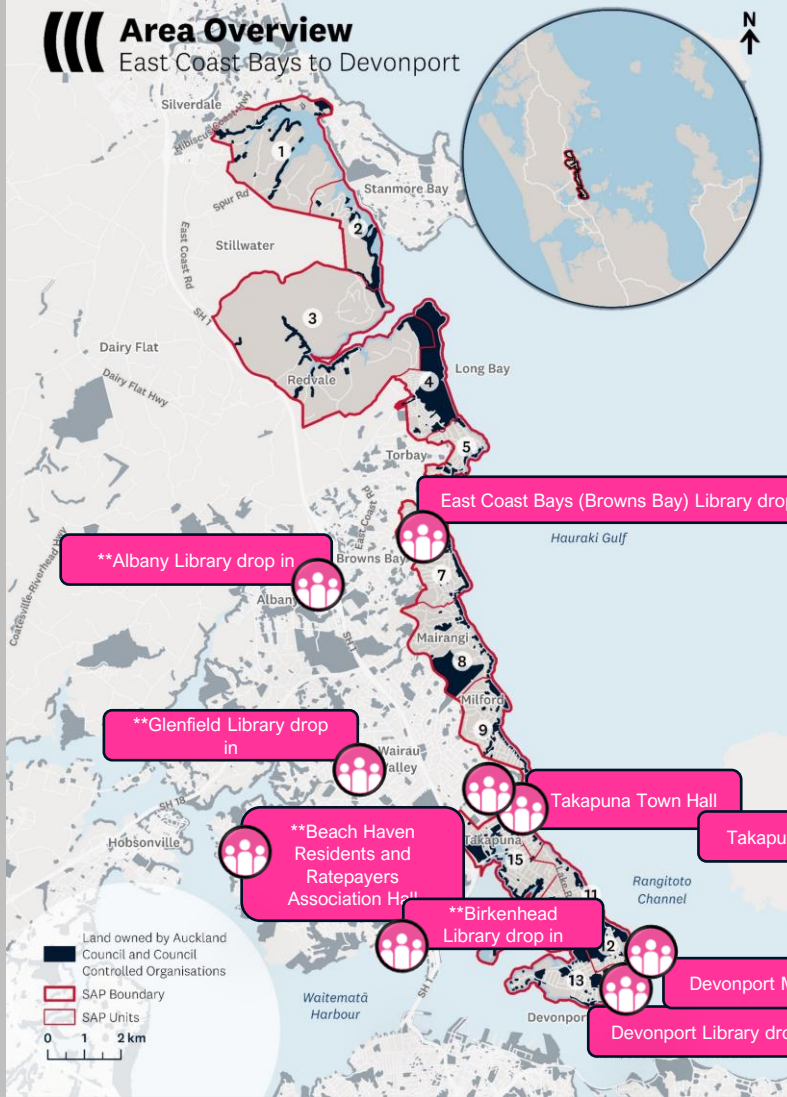
## Webinars:

- Coastal Hazards 101
- Weiti Estuary to Devonport SAP intro

\*\* indicates dual events for Weiti Estuary to Devonport Peninsula and Waitemata Harbour West

## Area Overview

East Coast Bays to Devonport



Digital



# Shoreline Adaptation Plans

## Community engagement Weiti Estuary to Devonport Peninsula



Community engagement period: 2 August – 26 September 2024



# Events

## Market Style Drop-in:

- Avondale Markets
- Catalina Bay Markets, Hobsonville
- Seddon Fields Sports Ground, Grey Lynn

## Presentations and Q/A:

- Hub West Hall Henderson
- The Ship “Coxs Bay”, Westmere
- Beach Haven Residents Association Hall

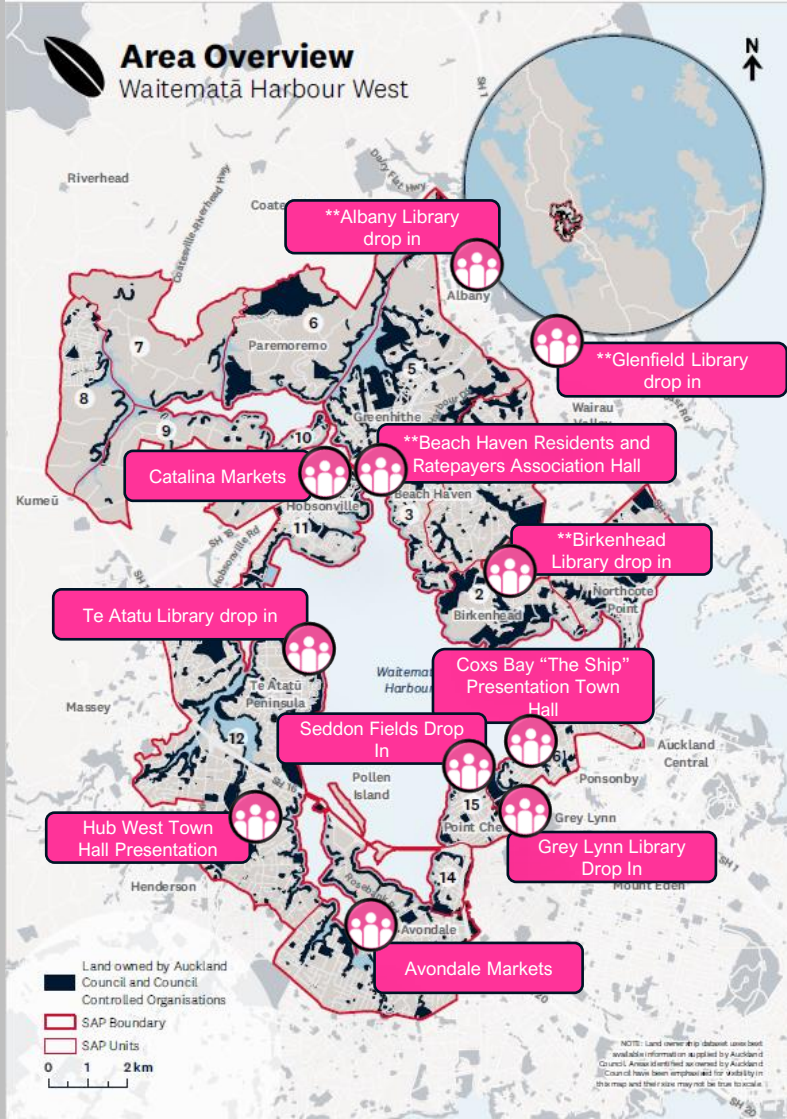
## Drop in Library events:

- Point Chevalier Library
- Birkenhead Library
- Te Atatu Library
- Grey Lynn Library

## Webinars:

- Coastal Hazards 101
- Waitemata Harbour West SAP intro

\*\* indicates dual events for Weiti Estuary to Devonport Peninsula and Waitemata Harbour West

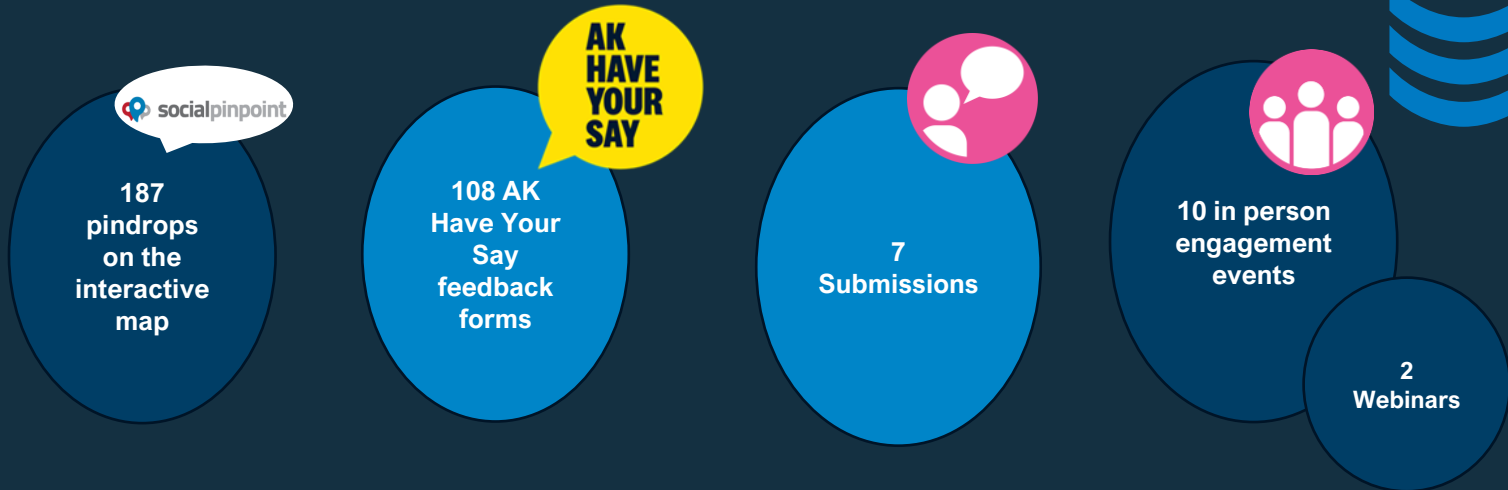


Digital



# Shoreline Adaptation Plans

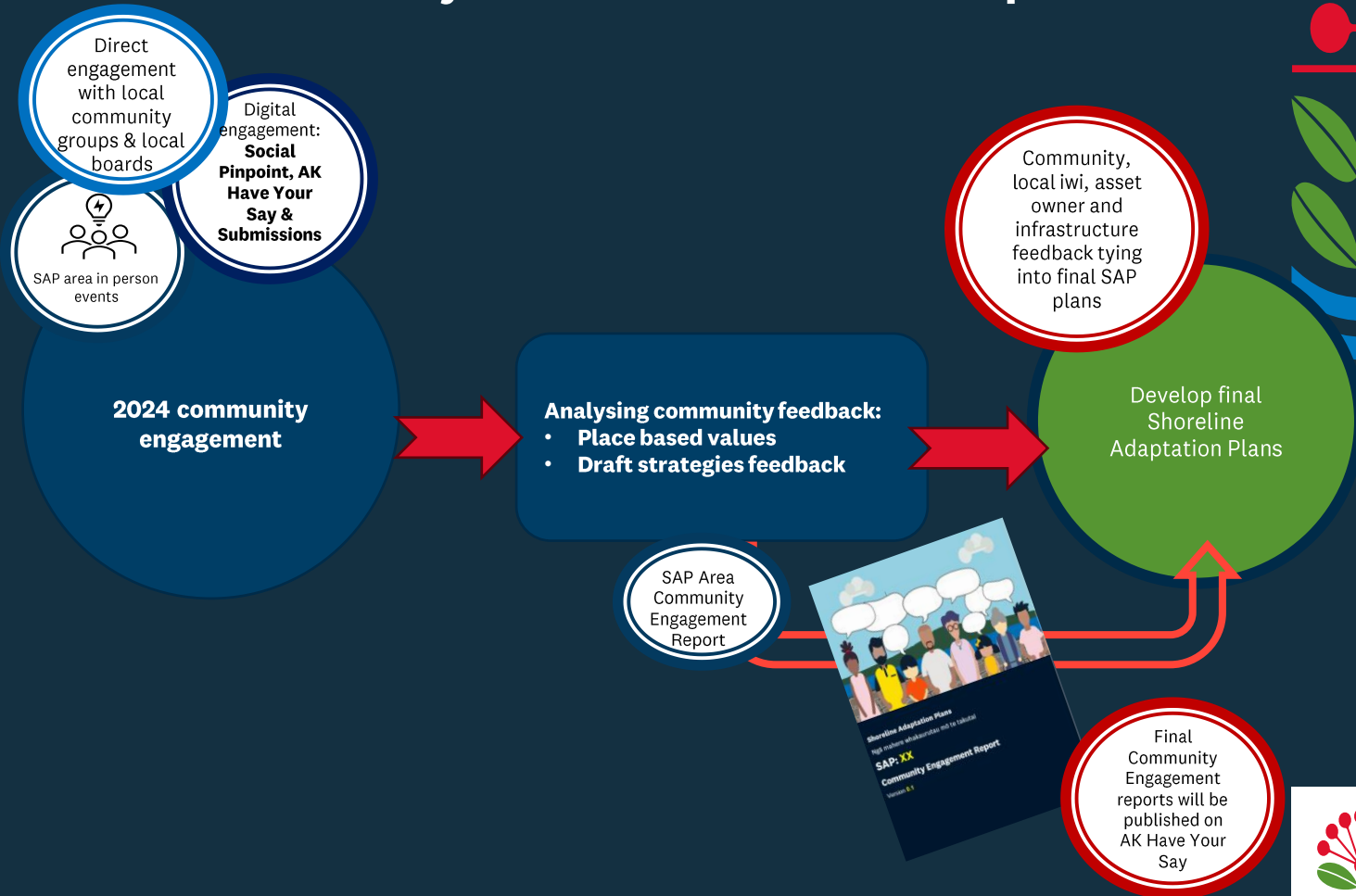
## Community engagement Waitemata Harbour West



Community engagement period: 2 August – 26 September 2024



# Community feedback > SAP Plan development





# Waitemata Harbour West and Weiti Estuary to Devonport SAPs: Timeline

**Publish  
Community  
Engagement  
Reports  
(NOW)**

- Full reports
- Any minutes and materials from community hui

**Review DRAFT  
SAP Plans and  
refine  
strategies  
/other content  
& infographics  
(NOW)**

- Ongoing local iwi, local board, asset owner and infrastructure providers
- Close the loop with communities \_socialising engagement reports

**Local Board  
workshops  
(Early – Mid  
2025)**

Workshop final version of SAP reports

**Endorsement &  
Approval  
Sought  
(Mid 2025)**

- Governing Body
- Local Board(s)



# Weiti Estuary to Devonport Peninsula & Waitematā Harbour West: Shoreline Adaptation Plans

Stay in the loop on **SAP plan progress updates** by:

- Scanning the QR code or visit  
[akhaveyoursay.aucklandcouncil.govt.nz](https://akhaveyoursay.aucklandcouncil.govt.nz)
- Visiting the Shoreline Adaptation Plan webpage at  
[AucklandCouncil.govt.nz](https://AucklandCouncil.govt.nz)
- Or Email:  
[shorelineadaptationplans@aucklandcouncil.govt.nz](mailto:shorelineadaptationplans@aucklandcouncil.govt.nz)



**Further information:  
Shoreline Adaptation Plan Recap**



## Why are we developing Shoreline Adaptation Plans (SAPs)

Auckland's coastlines are regularly impacted by coastal hazards, such as flooding and erosion, which are expected to increase because of climate change and sea-level rise, with sea level rise in New Zealand predicted to increase by 0.60 – 1.60 metres by 2130. This is not including vertical land movement, which may increase sea level rise further.

Over time, land near the coast may experience more frequent and/ or more severe flooding and erosion, changing how these areas look and function. We need to adapt what and how we use coastal spaces, reducing the potential for harm or damage to our assets and the activities we undertake at the coast from the impacts of coastal hazards, catchment flooding and climate change.



### Coastal erosion

Coastal erosion is the loss of land due to coastal processes such as waves and tidal currents. This can result in the slow erosion of shorelines or the episodic instability of cliffs as the base erodes.



### Coastal inundation

Coastal inundation is the flooding of normally dry, low-lying coastal land due to extreme high-water levels that result from a variety of processes including tides, mean sea level anomalies and storm-surge.



### Rainfall Flooding

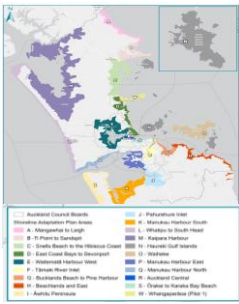
Rainfall flooding occurs when the drainage capacity of an area is exceeded, and water ponds or flows over the surface.



## What are SAPs, and what do they do?

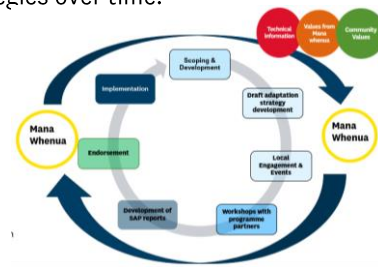
To better prepare for future extreme events and help plan for the impact our changing hazard risk has on our coast and the things we do there, Auckland Council is developing Shoreline Adaptation Plans (SAPs). Each plan is focused on the long-term strategic and sustainable coastal management of Auckland Council-owned land and assets, including all reserve land, roads, our water networks (potable, stormwater and wastewater) and regional and local park facilities on or near the

These plans respond to Auckland Council's Coastal Management framework (2010) and implement the coasts & communities theme of Te Tāruke-ā-Tāwhiri: Auckland's Climate Plan. To ensure the plans continue to meet the needs of communities each plan will be reviewed every ten years or less.



## How are we developing Shoreline Adaptation Plans?

Each Shoreline Adaptation Plan is developed via four different workstreams: **local iwi engagement, community engagement, technical guidance** and **asset owner engagement**, overlaid with the support of **local boards and governing bodies**. Each workstream helps jointly inform and develop a roadmap for changing coastal management strategies over time.



## How can we adapt to manage risk and care for our coasts?

Within each SAP area plan, there are four major adaptation strategies that we can choose from to set a course for the future:



**No active intervention:** let nature take its course

**Limited intervention:** maintain and support the existing coastal environment and manage risk to council assets and activities

**Hold the line:** fix the coastal edge at a specific location

**Adaptation Priority Area (APA)** a priority area for adaptation to ensure activities and assets are provided in appropriate locations